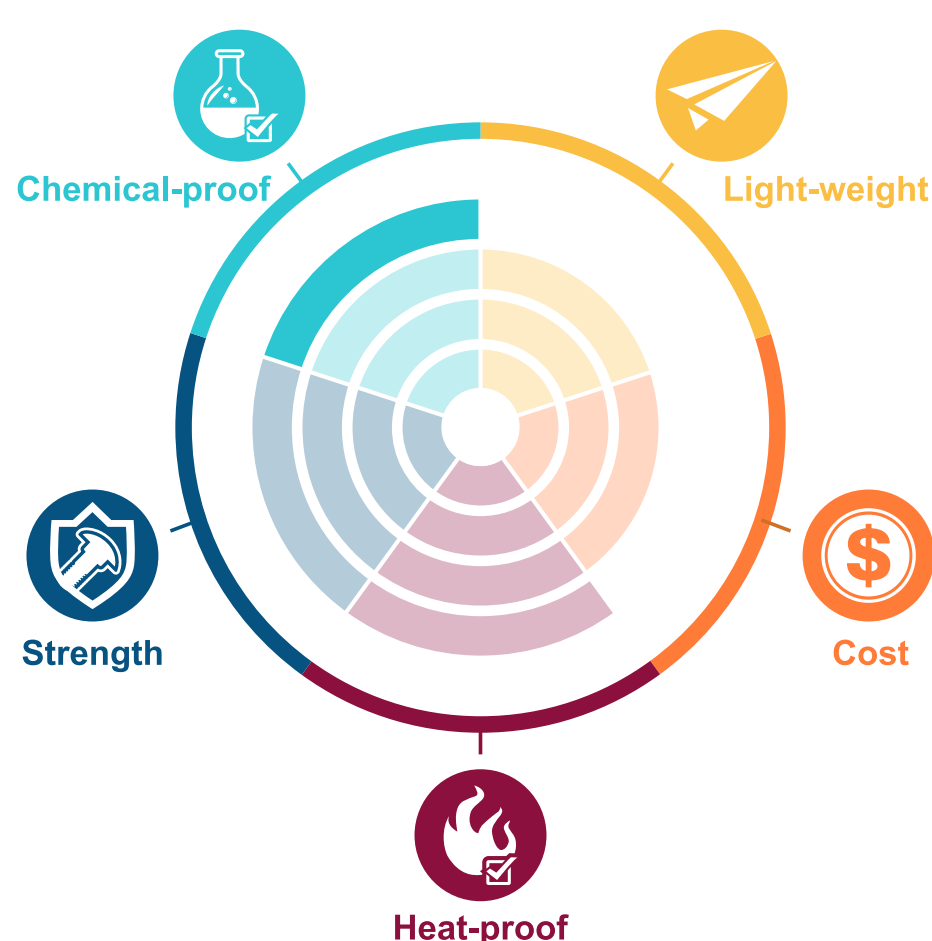


Hex Head Screws



Model SBTPPSM(-)(L)

PPS Polyphenylene Sulfide / Advanced Engineering Plastics

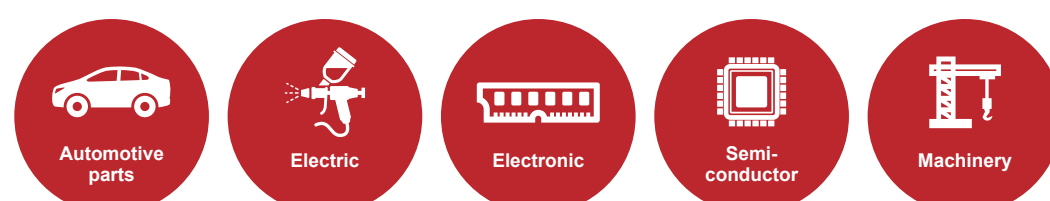


PPS is a kind of semi-crystalline, high-heat thermoplastic polymer that offers exceptional dimensional stability for precision-molded components needing to withstand prolonged, high-temperature service. Its inherently flame retardant and chemical resistance qualities make it competitive to PEEK and fluoropolymers.

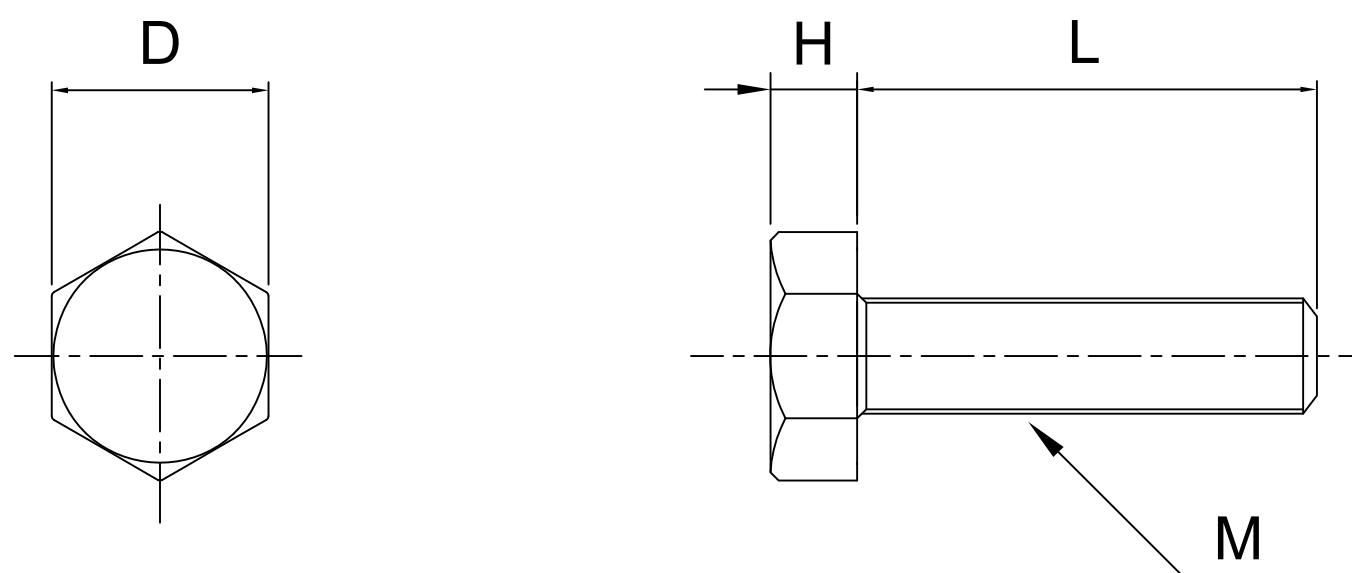
Product Properties

1. Outstanding long-term heat resistance properties (200-240°C).
2. Minimum molding contraction rate and low moisture absorption.
3. Outstanding chemical resistance.
4. High mechanical strength and rigidity. Outstanding anti-fatigue and anti-creep properties.
5. Flame retardant (UL94V-0 without inclusion of flame retardant agents)
6. Offers outstanding electrical properties at high temperature, high humidity and high frequencies.

Applied industries



Specs



Model: SBTPPSM()-(L)

M	4	5	6	8	10	12
DxH	7x2.8	8x3.5	10x4	13x5.5	17x7	19x8
Pitch	0.7	0.8	1	1.25	1.5	1.75
L(mm)	4	-	-	-	-	-
	5	•	-	-	-	-
	6	•	•	-	-	-
	8	•	•	-	-	-
	10	•	•	•	•	-
	12	•	•	•	•	-
	15	•	•	•	•	•
	16	•	•	•	•	-
	20	•	•	•	•	•
	25	•	•	•	•	•
	30	•	•	•	•	•
	35	•	•	•	•	•
40	•	•	•	•	•	
45	-	-	•	•	•	
50	-	-	•	•	•	

Contact Information

No.60-3, Dongqi 7th Ln., Lukang Township, Changhua County 505008, Taiwan.
 TEL: +886-4-778-4688
 FAX: +886-4-778-4268
 E-mail: sales@plasautotw.com

