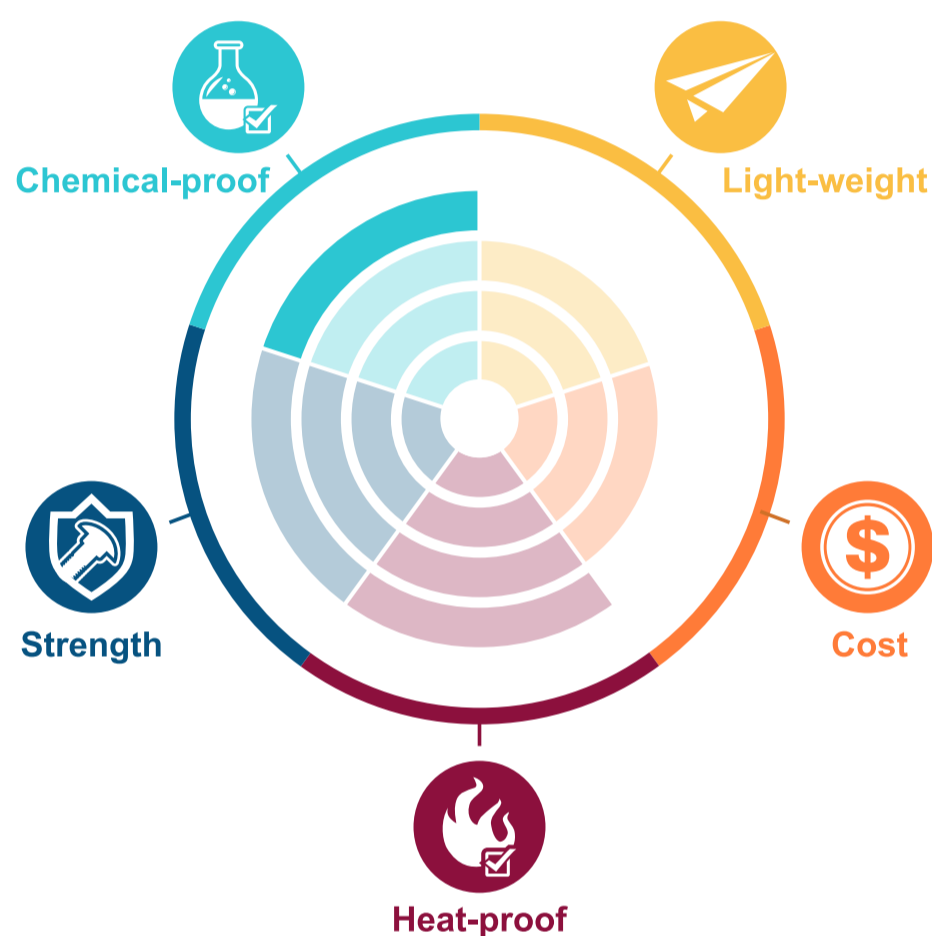


Gaskets



Model WPPSM()

PPS Polyphenylene Sulfide / Advanced Engineering Plastics



PPS is a kind of semi-crystalline, high-heat thermoplastic polymer that offers exceptional dimensional stability for precision-molded components needing to withstand prolonged, high-temperature service. Its inherently flame retardant and chemical resistance qualities make it competitive to PEEK and fluoropolymers.

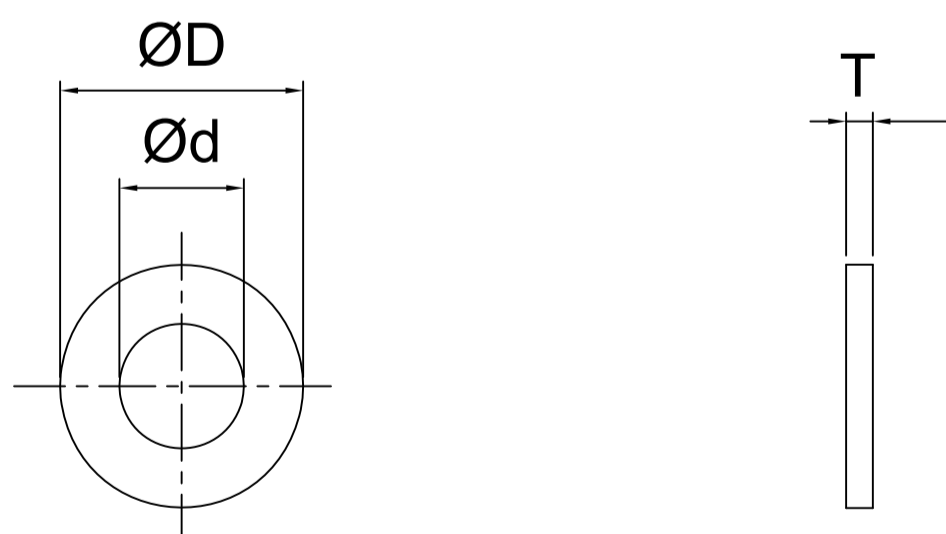
Product Properties

1. Outstanding long-term heat resistance properties (200-240°C).
2. Minimum molding contraction rate and low moisture absorption.
3. Outstanding chemical resistance.
4. High mechanical strength and rigidity. Outstanding anti-fatigue and anti-creep properties.
5. Flame retardant (UL94V-0 without inclusion of flame retardant agents)
6. Offers outstanding electrical properties at high temperature, high humidity and high frequencies.

Applied industries



Specs



Model: WPPSM()

M	3	4	5	6	8	10	12
Dxd	7x3.2	9x4.3	10x5.3	12.5x6.4	17x8.4	21x10.5	24x13
T	0.5	0.8	1	1.6	1.6	2	2.5

Contact Information

No.60-3, Dongqi 7th Ln., Lukang Township, Changhua County 505008, Taiwan.

TEL: +886-4-778-4688

FAX: +886-4-778-4268

E-mail: sales@plasautotw.com

