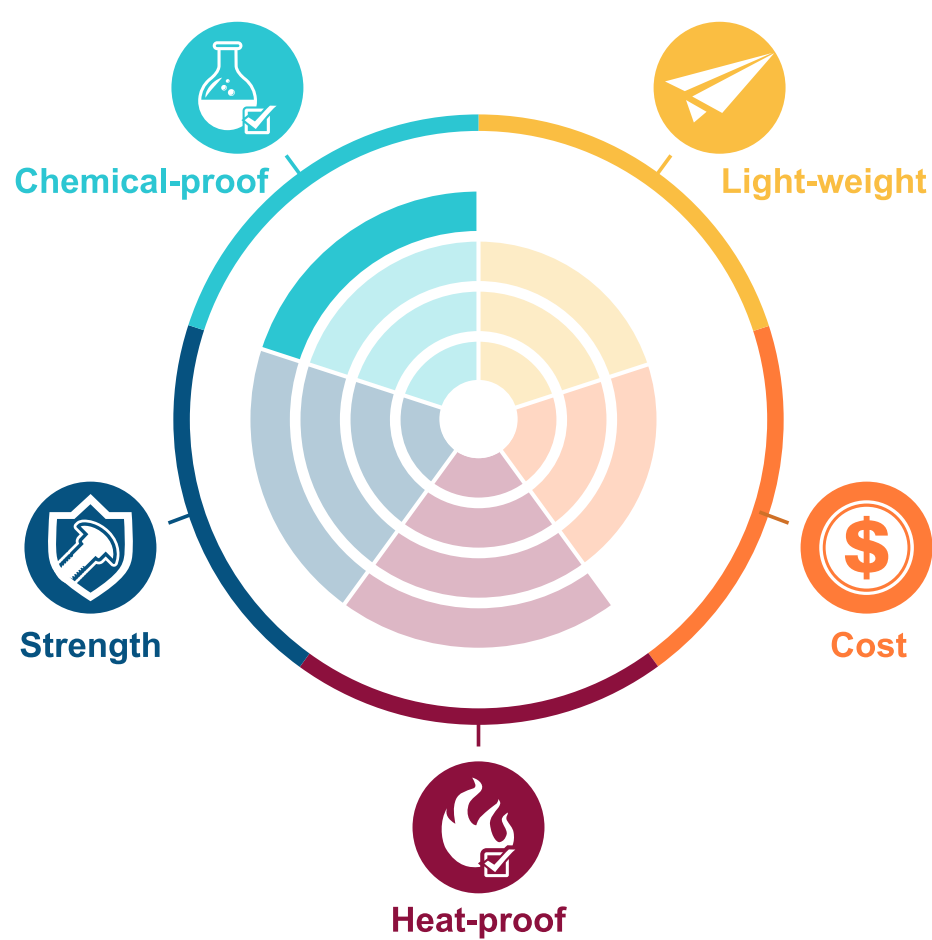


Nuts



Model NPPSM()

PPS Polyphenylene Sulfide / Advanced Engineering Plastics



PPS is a kind of semi-crystalline, high-heat thermoplastic polymer that offers exceptional dimensional stability for precision-molded components needing to withstand prolonged, high-temperature service. Its inherently flame retardant and chemical resistance qualities make it competitive to PEEK and fluoropolymers.

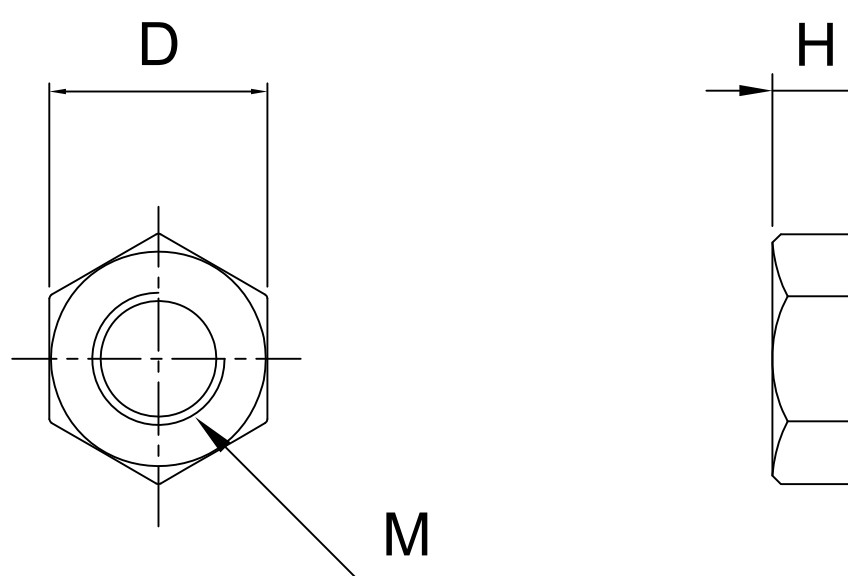
Product Properties

1. Outstanding long-term heat resistance properties (200-240°C).
2. Minimum molding contraction rate and low moisture absorption.
3. Outstanding chemical resistance.
4. High mechanical strength and rigidity. Outstanding anti-fatigue and anti-creep properties.
5. Flame retardant (UL94V-0 without inclusion of flame retardant agents)
6. Offers outstanding electrical properties at high temperature, high humidity and high frequencies.

Applied industries



Specs



Model: NPPSM()

| M | 3 | 4 | 5 | 6 | 8 | 10 | 12 |
|--------------|---------|-------|-----|------|--------|------|-------|
| DxH | 5.5x2.4 | 7x3.2 | 8x4 | 10x5 | 13x6.5 | 17x8 | 19x10 |
| Pitch | 0.5 | 0.7 | 0.8 | 1 | 1.25 | 1.5 | 1.75 |

Contact Information

No.60-3, Dongqi 7th Ln., Lukang Township, Changhua County 505008, Taiwan.

TEL: +886-4-778-4688

FAX: +886-4-778-4268

E-mail: sales@plasautotw.com

