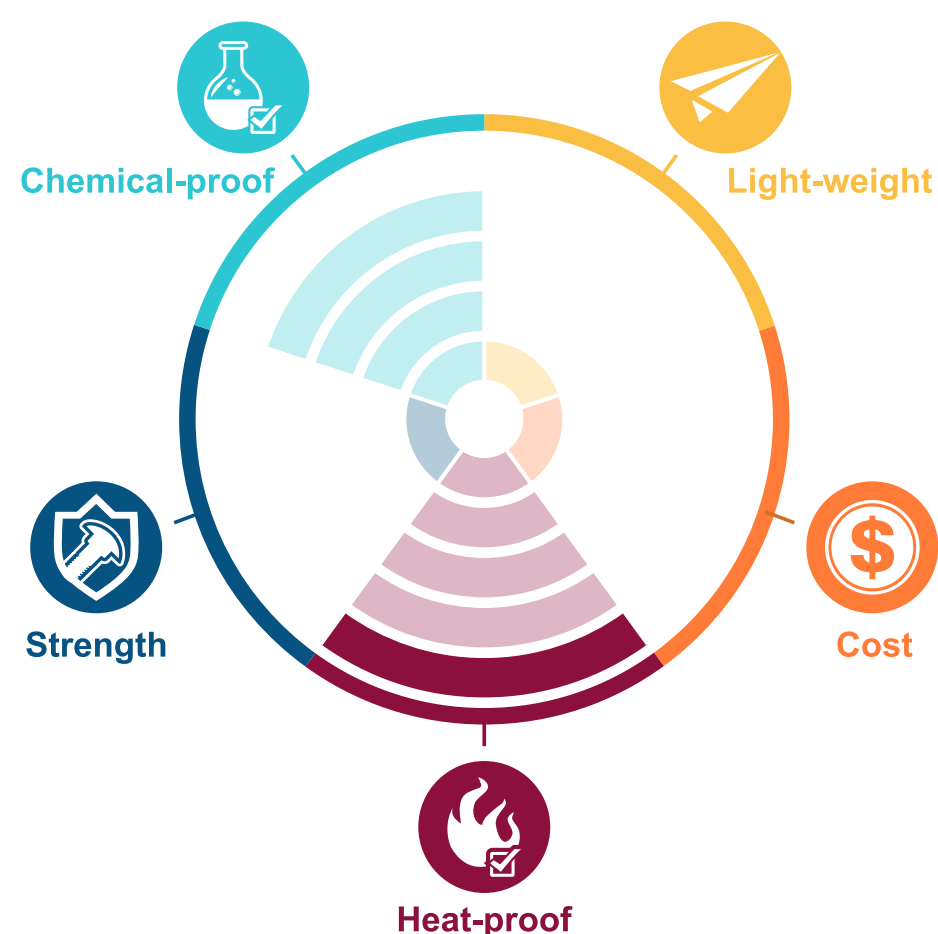


# Gaskets



Model WPTFM( )

**PTFE** Polytetrafluoroethylene / Engineering Plastics



PTFE is widely used in automotive, aerospace, semiconductors, electronics and common household appliances because of their unique non-adhesive and low friction properties as well as their superior heat, chemical and weather resistance and superior electrical properties.

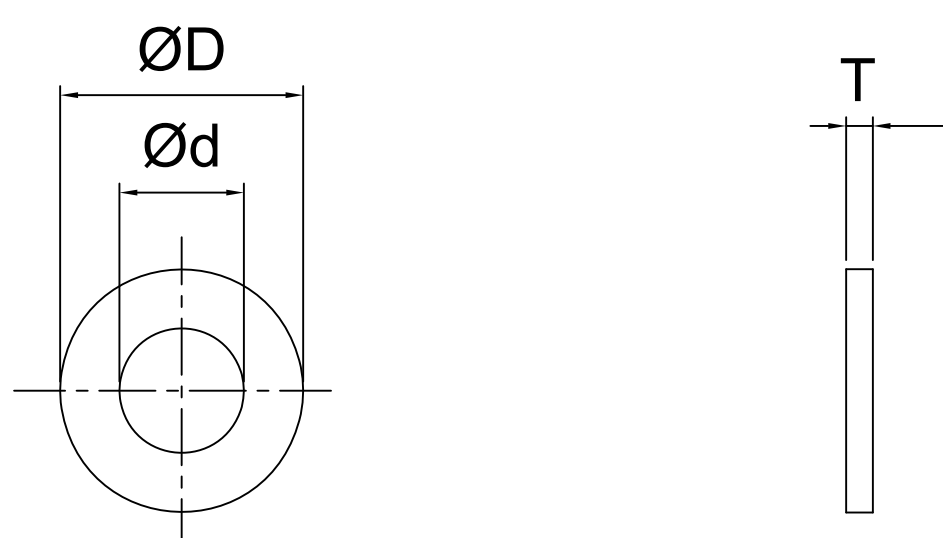
### Product Properties

1. High heat resistance / good heat stability.
2. Excellent weathering resistance.
3. Low friction coefficient.
4. Superior electrical properties.

### Applied industries



## Specs



Model: WPTFM( )

M	3	4	5	6	8	10	12
Dxd	7x3.2	9x4.3	10x5.3	12.5x6.4	17x8.4	21x10.5	24x13
T	0.5	0.8	1	1.6	1.6	2	2.5

### Contact Information

No.60-3, Dongqi 7th Ln., Lukang Township, Changhua County 505008, Taiwan.

TEL: +886-4-778-4688

FAX: +886-4-778-4268

E-mail: sales@plasautotw.com

