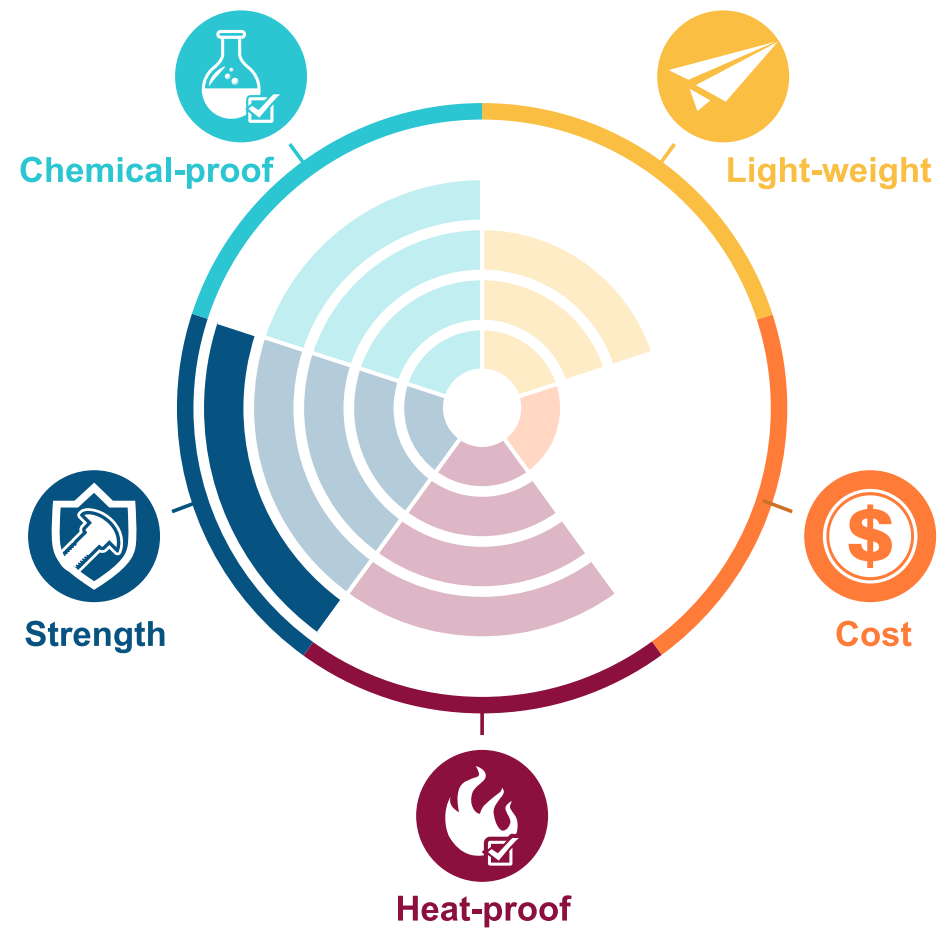


Bushing



Model BUPEKC-(Inner diameter)

PEEK+CF Polyetheretherketone



Peek+CF, this high performance material has excellent composite performance in mechanical property, heat resistance and chemical resistance. When reinforced by adding carbon fiber, not only is its strength increased, with better wear resistance, but also it produces anti-static effect.

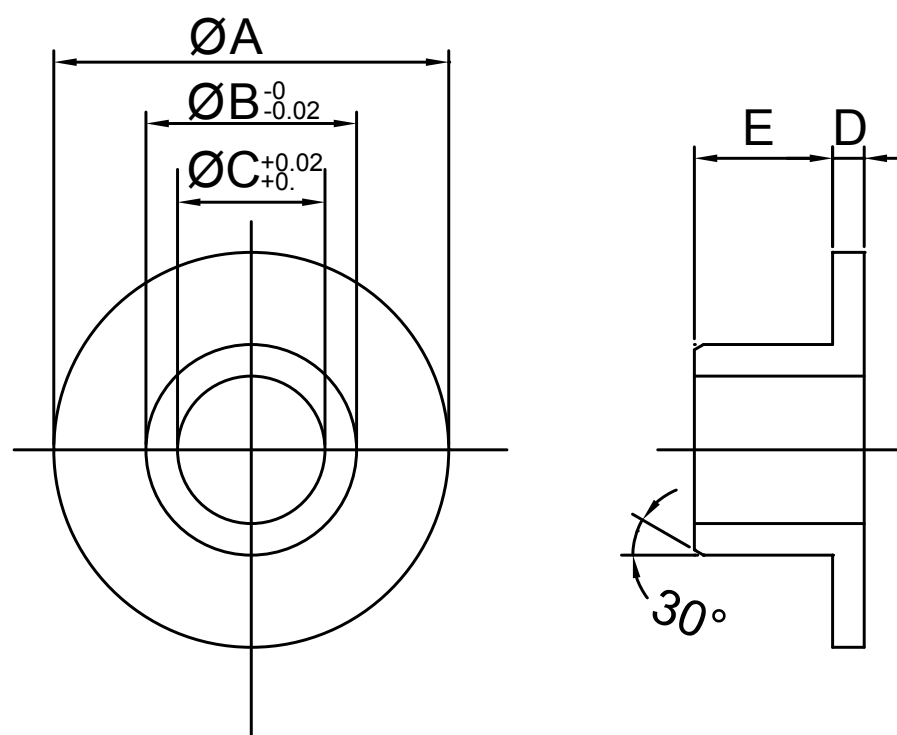
Characteristics

1. High mechanical strength, rigidity and hardness; heat resistance.
2. Excellent wear resistance and friction performance.
3. Good dimension stability.
4. Outstanding chemical-resistant and hydrolytic performance.
5. Extraordinary high-energy radiation resistance (Y-, X-rays).

Applied industries



Specs



Model: BUPEKC-(Inner diameter)

Specs	2.6	3	4	5	6	8	10	12	15	16
Dimensions										
A	6.0	7.0	9.0	12.0	12.0	15.0	18.0	20.0	23.0	24.0
B	3.6	4.0	5.0	6.0	8.0	10.0	12.0	14.0	17.0	18.0
C	2.6	3	4	5	6	8	10	12	15	16
D	1.0	1.0	1.0	1.0	1.0	1.0	1.0	1.0	1.0	1.0
E	1.1	2.3	3.0	5.0	6.0	7.5	9.0	12.0	12.0	17.0

Contact Information

No.60-3, Dongqi 7th Ln., Lukang Township, Changhua County 505008, Taiwan.
 TEL: +886-4-778-4688
 FAX: +886-4-778-4268
 E-mail: sales@plasautotw.com

